



# Bigfoot Field Guide

VOLUME 1, ISSUE 11

JUNE 15, 2010

Where researchers think outside the box!!

## SPECIAL POINTS OF INTEREST:

- Oklahoma Memorial Day 2010 Expedition
- Oklahoma Sighting Investigation
- A lesson learned
- Boggy Depot Bigfoot Conference 2010
- Cache, Oklahoma Presentation
- Featured Sighting Report

## INSIDE THIS ISSUE:

MABRC Forum news	2
Equipment Corner: ATVs	3
Oklahoma Sighting Investigation	4
A lesson learned.	6
Boggy Depot Bigfoot Conference 2010	7
Cache, Oklahoma Presentation	8
Featured Sighting Report	9
Project Marker	10
Featured MABRC Researcher	11
Submitting a Sighting Report	12

## Oklahoma Memorial Day 2010 Expedition

The MABRC conducted their annual Oklahoma Memorial Day 2010 Expedition for the 4th year in a row, and this year saw 32 MABRC members attend and get involved in Bigfoot Research.

Those in attendance were:

Bushman, Squatchfinder, Bighead, Darkwing, Cherokee Rose, Driveroperator, Goose, No Mercy, Butterfly w/guest, Biggimm, Ship, Tinyone w/mom, Splatter w/husband and son, Bog, MMAfan w/guest, Stooze75 w/dad, Red-tailhawk w/daughter, 72 Beetle, Bear, Gearman w/family and Sensortech. And independent researcher, Laughsquatch also was in attendance.

An advance team arrived on Tuesday before the weekend, and spent several days readying the base camp area and exploring, those team members were Bushman, Squatchfinder and Bighead.

That Wednesday night, rocks were thrown at Bushman's trailer upon the ridgeline.

Everyone began arriving on Thursday afternoon and multiple teams were deployed to listening posts that night with some success, as vocalizations were returned from a ridgeline in between the two teams after the crying baby audio cd was played.

After the listening post teams returned to Base Camp, another team quickly headed out with the Thermal Camera and positioned themselves to intercept any Bigfoot going or returning from the Honobia dump.

Early Friday morning, a possible sighting was thought to have occurred, but after a sweep of the thermal camera, it was concluded that nothing was there.

Friday afternoon saw several forays into the bush, in search of Bigfoot evidence, with one team encountering a large black bear, while another team discovered some well used game trails that showed evidence of something tall traveling along the trail from the many branches broken off at heights of 7 to 8 feet high.

The trails eventually led to an area where possible bedding areas were found, as large piles of pine needles and limbs were found in an area of about 50 to 75 feet of each other, with the nearest pine trees over 30-50 feet away. The branches had been stripped off the trees and not cut, and after photographing the area, the team forged on along the trail.

Stopping eventually to rest and listen for awhile, the sweltering heat was beginning to take it's toll on one of the younger members of the team, so it was decided to return to camp and eat.

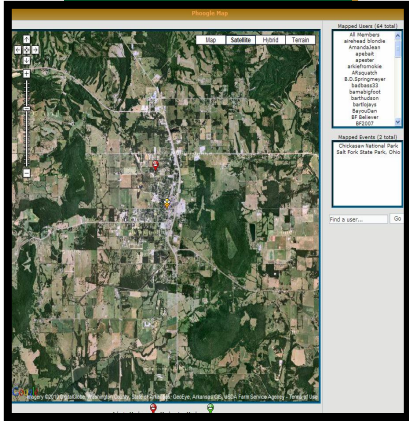
Several hikes were conducted into the night, in an effort to stir up activity.

Saturday saw many of the MABRC members head for a creek and swim for awhile, quite a welcome relief.

(cont on page 5)



Newsletter Graphics courtesy of MABRC Member Daniel "Reverend Strone" Falconer. The MABRC appreciates Daniel and his hard work on designing the banners for this newsletter.



The MABRC Forums has a built in Google Maps feature that also displays Forum Members locations. This is a great tool for research too.

**DISCLAIMER:** Being a forum member does not mean you automatically are a MABRC Organizational Member, you must apply for membership within the Organization. Until you do, you are only a Forum Member.



# MABRC Forum News

[www.mid-americanbigfoot.com/phpbb3a](http://www.mid-americanbigfoot.com/phpbb3a)

The forum features this week include the Gallery area and the Phoogle Maps section. Both features have been around quite a while on the forums, and probably most forum users do not realize they are there.

The Gallery area has extensive sections for forum members to view, and if you are a MABRC Organizational Member, you will even see more categories that only those members of the forum can see. Like the old American Express commercials used to say, "Membership does have it's privileges".

To access the Gallery on the forum, you have to go to the drop down menu at the top of the forum page. Click on the Forum drop

Phoogle Maps will show the Forum user's location on a Google Earth map when the user fills out the Location on their user profile. By using this map, researchers can also view an area that they may be researching in.

To go to the Phoogle Map, go to the same Forum Drop-down menu and select MABRC Events Map.

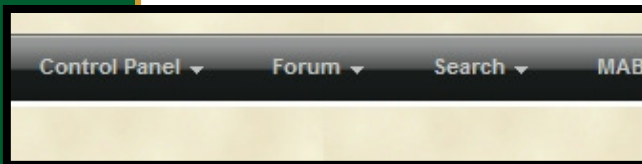
Another great feature of the MABRC forums are the Researcher Threads. These are threads that belong to both MABRC and Independent researchers, where they can chronicle their research for everyone to read.

If you are an independent researcher and would like a place to chronicle your own research in a place for others to learn from you, then



contact an Admin or Moderator on the MABRC Forums in order to start your own thread.

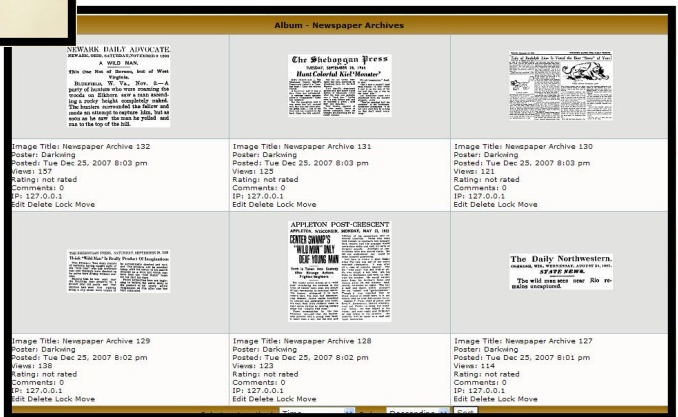
Read about the research, what's been tried, what works, what doesn't, it all is there in the MABRC Researchers threads.



down menu and select Gallery. This will take you to the various listings there.

To view a full size image, simply click on the photo and larger picture will then appear.

You should check the listings on a regular basis as more pictures and albums are listed from time to time.







## All Terrain Vehicles

The MABRC has adopted the use of ATV (All terrain vehicle) and UTV (Utility terrain vehicle) to research with. These vehicles allow the transportation of equipment and personnel into hard to access areas, and allow MABRC Researchers to mount extended research trips.

With the use of two Polaris Rangers, 10 researchers and their equipment can travel into the back wilderness areas with enough equipment to stay for 4 days. The Rangers also allow for the evacuation of injured researchers should the need ever arise.

ATV 4 wheelers add mobility to individual researchers and can be used off road and off trail when needed.

With the ability to carry several hundred pounds of equipment, a large 4 wheeler can carry everything the researcher will need for the duration of their time in the woods.

With the addition of thermal cameras, the Rangers have also become portable platforms for this equipment, allowing sweeps of large areas with a fast, mobile setup. The thermal

camera is also set up to be man portable and able to go with the researchers should they dismount the Ranger and go into the bush looking for heat signatures, all the time recording to a digital video recorder.

When confronted with water obstacles, the ATV and UTVs can quickly overcome most, and in the event it's too deep for the vehicles to transverse the obstacle, a rubber raft can be used to effect a crossing, leaving the vehicles behind on the creek bank.

With a snorkel kit installed on Driveroperator's Polaris, he can now ford water up to 4 feet deep without worrying about drowning out his engine.

The ability to carry equipment into the field fast and efficiently, have made this vehicles the backbone of the MABRC Research efforts in Oklahoma, allowing us to reach areas that have little to no human activity.





# Featured Investigation



The male Bigfoot stood above the vehicle on the side of the hill and howled down towards the occupants.

August 2009, a report was turned into the MABRC in Oklahoma. The incident had occurred at the MABRC Skilleysville research area.

Four individuals had parked near the underground spring there after dark. Upon hearing some splashing in the creek beside the parking area, the group looked over and saw what they described as a female Bigfoot with a juvenile Bigfoot with her.

As they watched the two Bigfoot, they failed to see the large male Bigfoot standing on the hillside above the parking area until it howled.

Diverting their attention to the big male, the female and juvenile beat a hasty retreat up-

stream on the creek.

The Skilleysville research area has long been considered a Nursery area, as over the years, MABRC researchers have found tracks of juvenile Bigfoot in the area, and with each passing year, the tracks grew bigger, while maintaining their basic shape.

The MABRC dispatched a team to the location to investigate the sighting. Despite the incident happening a week earlier, the area is a hotbed of activity and the investigation team decided that it was possible this location was a crossing point for the local Bigfoot underneath the bridge at the creek.

While no tracks were found in the rocky terrain, a team member was in the creek and had a large rock sail into a small shed nearby.

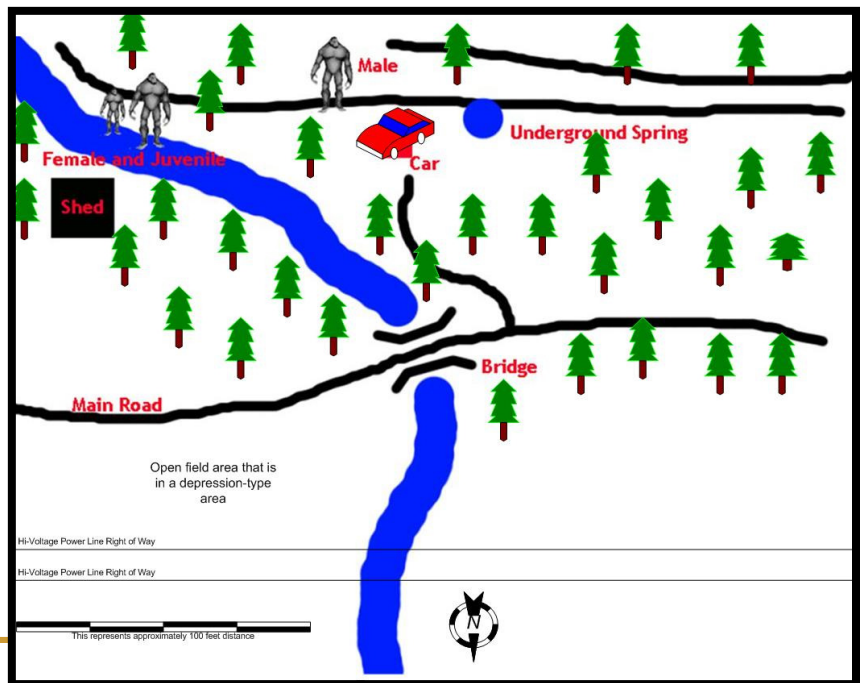
This location also was the same area where 5 years earlier, a bluff charge occurred with researchers up near the road. 2 large animals were apparently crossing the road when a researcher walked in between them on the road. The animal on the north side of the road attempted to bluff charge numerous times, causing the researcher to request backup by radio. When a second researcher approached, the bluff charge also included underbrush being shaken and snapped. The 2nd creature on the south side of the road, nervously paced back and forth into the wood line. Both researchers moved back down the road to allow the animals to finish their crossing.



Creek-view where female and juvenile were.



Hillside where male stood and howled.





# Memorial Day Expedition (cont.)

Several more day hikes were conducted, and the ladies all boarded Splatter's Polaris and did some exploring of their own. A great bonding moment for them.

Darkwing, Cherokee Rose and Butterfly made Bar-B-Q and Brown Gravy Meatballs for dinner for the entire camp, and there wasn't much left, everyone had worked up an appetite.

Splatter's husband then took all the kids present on a joyride on the Polaris, and you could hear the kids laughing down the road. We hoped that the local Bigfoot would hear the kids and come investigate.

With nightfall, several night hikes took place, and Driveroperator and Zane (MMAfan's guest) set up a remote camp several ridgelines over and then returned to go with the listening post going up the ridgeline from base camp. While movement was heard, the thermal camera could not see anything in the woods.

Sunday morning, after breakfast, many members began breaking camp, with Biggjimm, Stooze75 w/ dad, Gearman w/son decided to stay one more night.

They had activity the last night, ranging from chatter inside the camp, to what appeared to be something



walking through the camp. Something also took the popcorn ball that was hung up inside the camp perimeter.

For more details on the expedition, including the audio, video and pictures and the experiences of those who attended, go to the MABRC Forums at [www.mid-americanbigfoot.com/phpbb3a](http://www.mid-americanbigfoot.com/phpbb3a) and go to the MABRC Expeditions area.



Photos on this page:

Top: Picture of possible bedding area.

Second down: Splatter's Husband, Cherokee Rose, Splatter's Son, and Splatter go through the bush in the bedding area.



Third down: Stooze75 stokes the fire on Sunday night while Biggjimm sits in the background.

Bottom: The MABRC team cools off in the creek.





“There is a group of individuals that have had and continue to have agendas. “

Watch I

## A lesson learned.....

**Due to recent events, the opportunity came for the Alabama Bigfoot Forums and the MABRC to put some things behind us. Here is a statement from Watch I, the Admin and owner of the Alabama Bigfoot Research Forums.**

Because of the recent actions, statements, accusations and claims made by several former members of this forum, I discovered that I owe one Bigfoot Research organization an apology.

What I discovered is this. There is a group of individuals that have had and continue to have agendas. They care not who they use or what lies they tell. They spare no feelings, ridicule, belittlement, slander, verbal or written abuse. They tell lies as fact and give accounts that involve others with twisted stories of actual events that help promote themselves as the victim of the stories, when in fact the events did not take place as they say it did.

They tell lies on others to turn people against those that know the real story, in an effort to cover their own lies.

In the effort to make themselves appear to know more than they do, they tell amazing stories of events that did not happen. When questioned about the events, they turn on those asking the questions and sick their dogs on them. This in turn starts the chain of events that destroys relationships, friendships, and reputations.

The person that starts this chain of events stays in the

background, while the others do the dirty work. This is to keep them looking clean and innocent from all wrong doing. The harlots wipe the poisonous honey from their lips and state that they have done nothing wrong. When you stand before God, you try telling HIM that. I will leave your just reward in HIS hand.

This all started back several years ago and the actions and lies worked so well against some individuals, it was used against groups as well. They will not make the claims directly, because they know they will be called out. They convince others that they have been wronged with their lies, convince them that they need to do something about it. It's part of their little plan. They get them to feel like the victim and they have been greatly wronged and they need to stand up and tell their story or they convince others to stand up for them. When they all grab their pitchforks, the tar and feathers and the hanging ropes, the ones that instigated the whole thing stand in the background smiling and say, I have done nothing wrong.

Myself and many others have been victims of this deceit. We have been told lies by some that, at the time, we had no reason to doubt their word. We trusted those we asked for honest answers but because of past lies, they could not tell us the truth.

They did not want us to contact another group or person because they feared we might find out the truth about them.

With this said, I would like to

extend my honest and sincere apology to the MABRC group and its members. I made remarks during a blogtalk show, in the chatroom that were unfounded and based on lies told to me by one I trusted at the time.

Jim Grant (Bear) and myself, talked about this and both of us have come to the conclusion that we had judged the MABRC wrongfully.

It is my wish that we can put aside our past mis-judgment and hopefully start a well grounded and healthy working relationship between our group of researchers. The knowledge and expertise on both sides can help us all in our quest.

I will ask all members of the Alabama Research Group and the members of the MABRC to consider this.

I will post this on the blog for all to see.

I look forward to hearing from all concerned.

Mike (watch I)

Admin. Alabama Bigfoot Research

**The MABRC and the Alabama Bigfoot Forums have buried the hatchet.**

**To visit the Alabama Bigfoot Research site, go to [www.alabamabigfoot.com](http://www.alabamabigfoot.com)**



## Boggy Depot Bigfoot Conference 2010

The 2010 Boggy Depot Bigfoot Conference benefiting the Children's Miracle Network and the Children's Hospital Foundation of Oklahoma City.

**October 22nd and 23rd 2010 , Atoka Oklahoma at the Boggy Depot State Park.**

This event will have something for everyone, besides the conference there will be living history events with the Choctaw Nation, and living history re-enactors, Classic Custom cars on display, Custom Motorcycles, Vendors, food , music and so much more.

Friday Night there will be Bigfoot movies in the park, this will be free to the public , but the Wapanuka High School Senior Class will be selling refreshments , to raise money for their Senior Class trip.

At 7:00 am on Saturday morning , we will kick off the day with the Boggy Depot Bigfoot 5K Run/Walk, there will be a \$20.00 entry fee for adults and children under 12 will run/walk for free, and all entry fees will go the Children's Miracle Network and the Children's Hospital Foundation.

At 9:00 am the conference will start, with a great line up of speakers, like Ken Gerhard, Nick Redfern, R. Scott

Nelson, Cullan Hudson, C.O.P.S. - Central Oklahoma Paranormal Studies Group, Randy Harrington - M.A.B.R.C., and Mike Hall - Texla Cryptozoological Research Group.

We will also be having a raffle for some really cool items and the raffle tickets will be on sale only at the movie night, and during the day of the conference, ticket prices for the raffle will be \$5.00 each. And again all proceeds will be going to the Children's Miracle Network and Children's Hospital Foundation. The Conference will run from 9:00 am until 5:00 pm, 12:00 Noon – Break for

lunch.

At this time the Wapanuka High School Senior Class will be serving lunch plates (price has not yet been set), but this is again to raise money for their Senior Class trip.

5:00 pm Conference will end: At this time we will hold the drawing for the raffle and present to winners and make announcements.

5:30 pm Dinner will be served: The dinner will be provided by the Bigfoot Bar-B-Q from Caney, Oklahoma, cost of this plate dinner has not been set as of yet. Again we are not providing any of the food for this and the restaurant will be receiving all of the funds collected

from the dinner.

There will be live music at this time and throughout the day that will be provided by several different music groups from the local area. We hope that everyone will come out and help us , help some kids that need a fighting chance and in some small way we can give them hope.

For more information: Please look us up on Myspace by typing in boggybigfoot@aol.com.

And we really hope to see all you there for an amazing time.



## Joining the MABRC as a member

What does it take to join the Mid-America Bigfoot Research Center as a member? Unlike other groups, we have no membership fees, everyone contributes what they can, when they can, and they subsidize their own research.

From expeditions to conferences, the MABRC has a host of activities going on for it's

members, and members are also the first to see evidence submitted to the MABRC before it's released to the public.

To join as a member, go to the MABRC website and fill out the membership application, and once submitted, the MABRC Membership Coordinator will conduct a phone interview with you and you

hopefully will be on your way to becoming a full-fledged MABRC Researcher or Analyst.

Even if you consider yourself an armchair researcher, the MABRC led the way with designating armchair researchers as Analysts and putting them to work behind the scenes so join now.



# Biggimm gives presentation



MABRC Senior Field Researcher Jim “Biggimm” Whitehead gives a presentation on Bigfoot in Cache, Oklahoma.

MABRC Senior Field Researcher Jim “Biggimm” Whitehead gave a fantastic presentation on Bigfoot in Cache, Oklahoma with support from several members of the MABRC in attendance on May 15, 2010.

During the presentation, the audience was able to browse through many tabletop presentations and examine a good number of track castings Biggimm has in his collection.

Later, MABRC Senior Field Researcher, Dave “Squatchfinder” Ganote traveled over to Biggimm’s main research area for a visit with Biggimm, and was rewarded with a sighting and lots of other Bigfoot-related activity.

The MABRC is proud to have Biggimm as our Western Oklahoma State Director and a part of the MABRC family, he did a great job in Cache with his presentations.



Biggimm and Squatchfinder enjoy the local cuisine. Wherever MABRC researchers go, they contribute to the local economy of that area.



# Featured Sighting Report

In 2008, the MABRC conducted an expedition in the Fouke, Arkansas area. The location of this expedition was near where the following incident occurred. It was later highlighted on an episode of MonsterQuest in a re-enactment. The report here is from the TBRC website at [www.texasbigfoot.org](http://www.texasbigfoot.org) from Miller County, Arkansas.

**Bowhunter has early morning encounter while in hunting stand in Sulphur River Wildlife Management Area. Report# 03080033**

**Occurred October 2000**

**Witness Observation**

I scouted the area the day before and hung my ole' man climbing tree stand on a tree for the following morning's hunt. The only tree I could use was a small oak with a main fork that was about 12 feet off the ground and covered with poison oak. That means I could only climb up to that fork, and not my usual 20 or 25 feet which I usually like to hunt from. I'm not allergic to poison oak, so that wasn't going to bother me. I arrived early (4:45 A.M.) parked and got dressed. I've learned that to be a successful hunter, you have to be scent free. I dressed in my real-tree leafy suit and lacrosse rubber boots, sprayed down with scent killer and dowsed my boots with persimmon scent and walked to my stand (5:00 A.M.). The Moon was full and I could see with the use of my Streamlight (green light) pen light.

With the morning dew, I made no noise getting to my stand and without scaring game off with a large flashlight. I made it to my stand and found that the top portion was twisted around to the back of the tree and the bottom was moved to the base of the tree. Why did someone do this and not steal it? (5:20 A.M)

I was up the tree and had my bow in my lap with my arrow pointing away from me with it resting on my stand's gun rest. I pulled my earth scent wafers out and attached them to the outside of my back pack.

I was facing south with two big oak trees about 25 yards away. The clouds were moving fast and with the full moon, I could somewhat see in the dark.

I was very still and had everything camouflaged except my muzzy broadhead, on the end of my arrow. It was about 5:30 A.M. when I heard something walk up from behind me.

I turned slowly to see if I could see it. It was big and black and at first thought it was a couple hogs. They were too big to be hogs and I wondered whose cows were loose in the refuge. I was wanting them to hurry up and leave so they wouldn't scare the deer when something brushed up against my leg. I didn't hear anything climb up the tree with me so I kept still. I was looking forward when I saw a big black hand reach up and grab my muzzy broadhead. The hand was a shiny black and the fingers were huge! The palms were also black like a gorilla. When it grabbed my broadhead the razor blades cut him and it yelled like a bull! It was louder than a car horn and it was at my feet. It scared the crap out of me so I started yelling back.

And cussing! It ran off breaking trees and tearing down everything in its path. I sat there 15 minutes until it got daylight and left. I believe that I scared him/her as much as it scared me.

**Sounds**

Breathing and a loud holler like a bull.

**Additional Observations**

Another time, I heard tree knocking, had something big walk up to me while hunting on river and it was breathing heavy ( looked for it but never saw it.) Also found one bare footprint by a small creek (it was a little bit

bigger than mine, not like you see on t.v.) I had something throw something at me while I was on Sulpher River one time.

While wearing my leafy suit, I've had deer blow at me and not run. usually deer will blow and then run off. These deer will blow at me and then just stand there and watch me (only if my face is covered!!!!) If they can see my white face then they immediately blow and run away. (The point is, the deer cannot detect me visually while I am in this leafy camo and fully covered. It's really hard to see me in this.)

**Time and Conditions**

05:30 A.M. Partly Cloudy, Full Moon, around 50 degrees.



*The hunter was in a tree overlooking this area.*



*The view of the surrounding area.*

# Project Marker



MABRC Senior Field Researcher Dragonrr found this several years ago in her research area, it appears to be a drum log, with the drumsticks leaned up against it.

Pictures of different types of markers found in the woods.

The MABRC began Project Marker with the purpose of identifying and classifying “purported” Bigfoot markers in the wild.

It has three objectives:

- To identify tree, log and other markers associated with Bigfoot activity.
- To provide guidelines for the researcher in measuring, diagramming and locating such markers.
- To create a database of markers and their locations to aid researchers in the field.

The Project also categorized the different types of markers:

- Teepees
- Tree Bows
- Directional Sticks
- Stick Stacks
- X Formations
- Blinds/Nests
- Drum Logs
- Tree Breaks
- Tree Twists

The Project advises the Researcher to also look for any natural or man-made way the

structure could have been created. When the Researcher can't find any natural or man-made explanation for the way it was created, they then begin taking their measurements, GPS coordinates and other critical data of the marker.

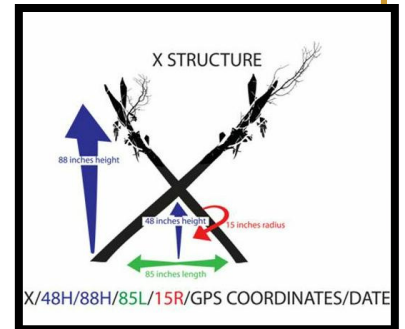
Below you see several types of markers covered by this project, the X Formation was discovered in British Columbia by MABRC Researcher Dragonrr, while the teepee and the tree bow were discovered in Oklahoma.

These structures were found in areas where normal human activities were non-existent, they were areas hard to reach and after examination, the researchers concluded they could not have been created naturally or created by man without quite a bit of

effort.

Included below is one of the diagrams used by Project Marker to measure and evaluate data from an X structure.

For more about Project Marker, please go to the MABRC Forums and go to the Project Marker area.



Teepee Structure



X Formation



Tree Bows



# MABRC Research Spotlight



## Rick “Tapemaster” Skeen

Rick is the resident archivist of the MABRC Forums for all sighting reports, a huge undertaking that we can't express enough how thankful the MABRC is that he's doing that job. He is also the West Virginia State Director for the MABRC.

**Location:** West Virginia

**Occupation:** Public Transportation

**Marital Status:** Married 35 years July 2009

**Kids; Pets:** 1 Dog | Cat | Cockatoo

**Hobbies; Skills:** Bigfoot, Poker Player, Old Time Radio and TV

**Favorite activity:** Squatch Hunting

**Favorite food:** How many pages I have for this question?

**Favorite movie/tv show:** Star Trek Voyager (TV) The Man Who Shot Liberty Valance (Movie)

**How did you get started into Squatching:** Really don't know except been interested since a child.

**Funniest Squatching Story:** Probably on my first trip into the field when we done a call blast and got sounds and movement. I was gone! Wasn't funny then but as I look back on it.....

**What would you do if confronted with an angry Squatch:** Probably nothing because I would have a heart attack.

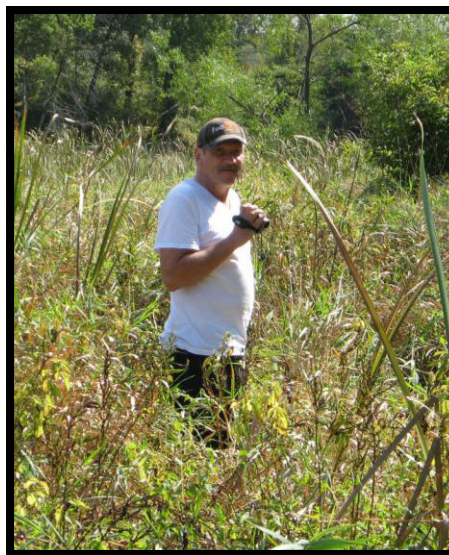
**Best advice to anyone who wants to go Squatching:** Just do it.

**If you could go back and relive a moment, what would it be and would you change anything?** How many pages do I have for this question?

**What have you gained from the MABRC?** Getting to meet other research-

ers and a great wealth of knowledge.

**What would you like to see happen in the next year as far as Squatching goes?** I would hope we get the evidence that we have been searching for that will prove existence.







**Mid-America Bigfoot Research Center**  
Where Researchers think outside the  
box!!



Founded in 1997, the MABRC originally started as the Green Country Bigfoot Research Center, to give Oklahoma it's first credible Bigfoot Research group.

In 2006, the GCBRC changed it's name to Mid-America to reflect the growing numbers of members joining from around the country.

With over 200 researchers and analysts in 4 countries, 3 continents and nearly every state in the U.S., the MABRC is becoming the leader in Bigfoot Research.

From the Bigfoot Field Guide TV shows, radio shows, forums, websites and now this newsletter, the MABRC continues to share information.

## Reporting a Sighting



The importance of turning in a sighting report is critical to Bigfoot Research, details from a sighting can be incorporated into a large database to formulate information that can show patterns in Bigfoot behavior, increasing the overall knowledge about the creatures.

If you have a sighting, there are numerous organizations out there to report it to, and at the MABRC, we take sighting reports through our website at <http://www.midamericabigfoot.com/joomla> and through e-mail at [sighting@midamericabigfoot.com](mailto:sighting@midamericabigfoot.com)

Please give us contact information so that a researcher can contact you with further questions if necessary. All contact and location information is kept confidential to insure the witness' privacy.



Remember, Bigfoot Research can only grow through information.