

- Learn new research techniques
- Meet the researchers in the field
- Get tips and tricks to try out.
- Get answers to those questions that you can't get answered anywhere else.

INSIDE
THIS ISSUE:

What is.....?	1
January 2008 Expedition	2
Online Sightings Database	2
Honobia Bigfoot Conference 2008	3
BFGTV	3
Tips and Tricks	3
FAQs	4

Bigfoot Field Guide

VOLUME 1, ISSUE 1

FEBRUARY 2008

Who is the MABRC?

The Mid-America Bigfoot Research Center has constantly sought ways to share research information with other researchers, and now, we have our own newsletter.

With the Bigfoot Field Guide Television and Radio networks, along with the forum, website and the Bigfoot Research Online Training Facility, MABRC continues leading the way.

Who do we share our information with? Everyone, we post it in the open for others to see.

Why, because only by sharing information, and not holding back, can we cooperate and solve the overall mystery of Bigfoot.

Started in 2003 as the Green Country Bigfoot Research Cen-

ter, we have evolved into the MABRC in early 2007, in which we now have over 70 research-



The MABRC Logo

ers and analysts in the group, from over 20 researchers, 4 countries, and 3 Continents.

We are always interested in new members and our goal is to

someday be the biggest and best Bigfoot Research group in the world. With over 70 in the group and growing everyday, that is a very possible vision.

You can visit us at any of our sites:

[The Forum](#)

[The Website](#)

[The Online Training Facility](#)

And you can find the Bigfoot Field Guide Television listed on [YouTube](#), while the Radio show is listed on [Talkshoe](#).

What is.....?

4x4 mode.

4x4 mode is when a Bigfoot actually gets down on all fours and travels that way for any distance. This usually occurs when sneaking up on prey, sneaking up on humans to get a better look, or when crossing a big area where concealment and foliage does not cover their movements.



This is similar to what 4x4 looks like.

When the Bigfoot gets into 4x4 mode, the mid-tarsal break actu-

ally hinges up the rear part of the foot. Effectively making the rear track look similar to a bear's. They use their hands by bending their fingers underneath their hands, and extending the thumb out for extra balance.

While not generally accepted by the Old School folks, 4x4 mode is seen quite a lot in Oklahoma and other southern states.

January 2008 Expedition



The January Expedition crew around the campfire.

The MABRC conducted an expedition on January 25th-27th, 2008 in Adair County, Oklahoma and had quite a turnout. We had GSMom, Nugget, No Mercy, Grizzlyadams, SensorTech, BayouDan, ElectricBigfoot and Darkwinglh.

For three days, the crew endured freezing temperatures and scoured the area for any evidence that could be found.

Stick structures, footprints, vocalizations and other evidence was found, and what

made the expedition worth it was the multiple-witness sighting of a Bigfoot. This occurred the last night of the expedition and got the witnesses really excited.

For more details, go to the following thread at the MABRC Forum.

[January 2008 Expedition](#)

From all the databases on the Internet, the MABRC is creating the largest searchable sightings database online.

Largest Sighting Database online..

The MABRC folks are busy putting together the largest, searchable sightings database ever constructed.

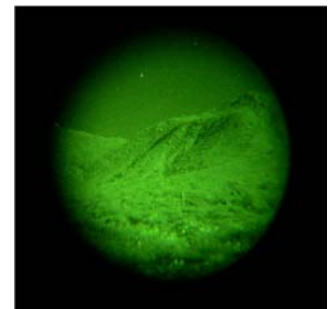
We've merged the online databases of all the major groups into one central location, and to further help researchers and analysts, we have put online tools on our forum to help them show percentages of everything from the weather

to hair color and even the time of day.

This is perhaps the best research tool available anywhere for researchers, as it can show trends for your area, and even nationwide.

To view this database, go to the following link:

[OSSIE Database.](#)



An actual newspaper article about the activity of Bigfoot at Honobia



The MABRC is proud to host the 2008 Honobia Bigfoot Conference, Oct. 3rd-4th. It gives us great pleasure to announce as the keynote speaker, Dr. Jeff Meldrum. Join us at the confer-

ence and the Festival as researchers talk about their research and evidence, show off the equipment they use, and just meet and greet with the public.

The MABRC is shooting for at least 40 of their researchers and analysts to be at the conference in a show of support

from the Bigfoot Community. Other groups are invited to show and have booths, do presentations and meet the public.

For more information, contact darkwinglh@alltel.net or visit the [MABRC Forum](#).

Featured Researcher



Our first featured researcher is Dragonrr from Vancouver Island, British Columbia, Canada.

Here is her

own words.

I became 100% interested in Sasquatch last fall when sharing some odd experiences with a hunting friend, then came to realize

Click the picture to go to Dragonrr's Research Thread.

when searching the internet that I may have not been so foolish in what I thought, was considered "make belief" in the real world.

I have a degree in Animal Sciences(Vet. Assistant) biology, chemistry, trained rodeo Horses, raise show dogs Rhodesian Ridgebacks, have a 5 acre Christmas tree farm, with chickens and turkeys. I presently work for BC Ferries Inc. as a 2nd Cook have other titles as Deckhand, 2nd stew-

ard Supervisor. I go on yearly Moose Hunting trips with my Hubby and friends in fall. I have been out the woods and have found 3 sites which I believe some are active. I'm Studying time lines of re-occurring visitations to the sites by Photo analysis comparison's of structure changes to "cross" locations, bed or nest structure changes, new print signs of activity, following recent sighting reports from websites in those areas. I love the mystic of this creature, hope to study it further by being a active researcher with MABRC for BC Canada. ..

“When using bait, there are quite a few things to remember to be successful in luring in a Bigfoot”

Tips and Tricks

The success you enjoy with using bait depends on a number of factors that the researcher should be aware of.

Always use organically grown fruit and vegetables.

Always wear rubber gloves when setting out the bait, so that human scent does not get on the bait.

Place the bait in a clear, open area

that can be spotted easily.

If using fish, place it on a line about 5 to 6 feet high.

If using meat, let it sit out for several days, to get a rancid smell to it. This seems to attract the Bigfoot quicker.

Use baits that will attract their curiosity, like toy pinwheels, cyalume glow sticks, neon colored

tennis balls and even wind chimes.

Experimentation is currently being done with honeysuckle and apple sprays to see if they could be used as attractants.

Bigfoot Field Guide Television

The MABRC has created their own television show, that has produced quite a few good segments.

There are several productions ongoing that covers the expeditions that the MABRC are conducting this year.

To view the episodes, you can go to the [BFGTV YouTube](#) site, or go to the Movie Theater area of the

forum at [Movie Theater](#), where you can actually view other video clips that have been found around the Internet.



BFGTV Segment Title Screen about Featured Sightings reports.



Mid-America Bigfoot Research Center

602 West Doyle
Stilwell, OK 74960

Phone: 918-696-1134
E-mail: darkwinglh@mid-america-bigfoot.com

Where Researchers think outside the box!!

In 2003, Green Country Bigfoot Research Center was created to give Northeast Oklahoma it's own full-time research organization. The research thrived and eventually in 2006, the GCBRC changed it's name to Mid-America Bigfoot Research Center, and now boasts over 70 researchers and analysts from 20 different states, 3 countries and 2 continents.

The MABRC is noted for their thinking outside the box attitude, where new things are tried daily in the research of North America's largest primate.



Frequently asked questions.....

In future newsletters, we will answer questions here from our readers and even from those asked on our forums.

To send in a question to be asked here and answered by the MABRC, e-mail darkwinglh@alltel.net and title the e-mail Newsletter FAQ.

If you wish to subscribe to this newsletter, send an e-mail titled subscription to darkwinglh@alltel.net.

