



Bigfoot Field Guide

Christmas Issue

VOLUME 1 ISSUE 14



DECEMBER 15, 2011

SPECIAL POINTS OF INTEREST:

- Dual Oklahoma 2011 Expeditions
- Oklahoma Foot Update
- Oklahoma Juvenile Pictures
- MABRC Cast Program.

INSIDE THIS ISSUE:

- Oklahoma Juvenile Photo 2
- MABRC Cast Exchange Program 4

Dual November 2011 Oklahoma Expeditions

The MABRC conducted dual November Oklahoma Expeditions with varied success.

The first was at Beaver's Bend State park and produced a great series of photos of what possibly is a juvenile Bigfoot crossing a trail. The adult that was with it was seen by four members of the MABRC Expedition team.

The pictures are inside this accounting of what happened during the encounter and more details.

Those in attendance at this expedition was Dragonzaphod, Biggimm, Gearman, Chiggermagnet, CompressorMike, Squatchfinder and Darkwing. It was a combined effort of the Western and Eastern Oklahoma MABRC researchers and despite a crafts

festival at the state park, the MABRC set off for some other areas where the encounter took place.

The second expedition was held in Adair County Oklahoma during the Thanksgiving Holiday weekend and during deer gun season. Those in attendance were CompressorMike, Red-tailha, Squish, Cherokee Rose, Squish, Sensesortech and Darkwing.

Although nothing solid was brought back from this expedition, it's purpose was to see if the Bigfoot in the area would

still be active during the deer season as they have in the past. The cold weather and the rain that came in, hampered a great deal of activities even though the MABRC Researchers did their best to get into the woods and check things out.



Oklahoma Foot Update

The MABRC was able to examine what is now known as the Oklahoma Foot. It appears to be a mummified foot that had been sheared off the bones of a foot somewhere and later deposited in the witness' yard. It was X-rayed and found to be missing the bones, and several samples were taken by the MABRC resident biologist and rehydrated to be examined under the microscope.

After examination, the foot was

taken to a major university for further testing.. Preliminary examination by the University has determined that the foot

could be as old as 6000 years old and is not a human foot. What it is, is still open to debate until further testing is completed.



Oklahoma Juvenile Photos



Some of the MABRC Researchers discussing the research being conducted during the expedition.

These photos were taken with an Iphone v.4 camera, and was taken within just seconds of each other. The researchers present were Biggjimm, CompressorMike, Squatchfinder and Darkwing.

Since a crafts festival was being held in Beaver's Bend State Park, the researchers traveled down to the Three Rivers Wildlife Management Area to check out the first recorded Bigfoot sighting in Oklahoma back in the 1800s.

The team checked out the area, and due to the lack of rain, many of the swamp areas for this location were dried up, and the team pushed further back into the area before coming to a dead end. A trail ran further up along the river area, and CompressorMike went down it to check it out while the other three spread out to look for any signs of Bigfoot activity.

A large tree structure was found and examined, and then a foot print was discovered nearby. Darkwing set off down the trail to find CompressorMike and went about a mile down the trail before running into CompressorMike. They began walking back to the vehicles and both commented how quiet the area was.

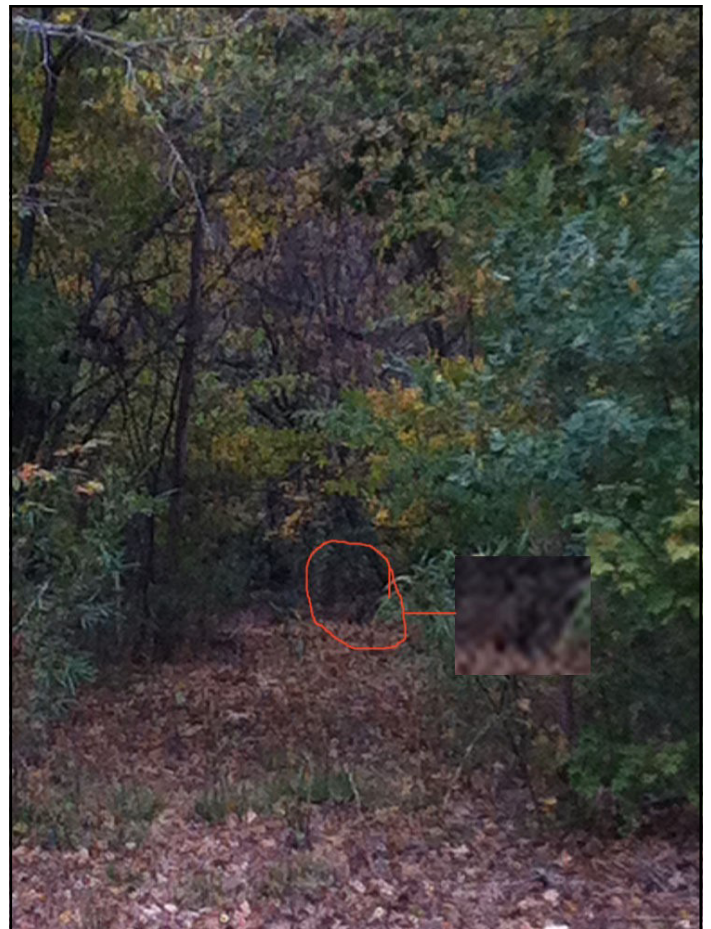
Upon returning to the vehicles, Biggjimm and Squatchfinder were waiting for them, having poured Hydrocal into the foot print to cast it. The decision was made to return later that night to research the area and pick up the still drying cast at that time.

As CompressorMike and Biggjimm began turning around to leave in their vehicle, Darkwing noticed something standing off to the side of the trail that he and CompressorMike had just came down. He brought it to Squatchfinder's attention and both saw something there. Attracting Biggjimm and CompressorMike's attention to something happening, everyone began watching down the trail.

Darkwing took his Iphone and took a series of pictures of the

trail and as luck would have it, he caught a small figure going across the trail on all fours, and upon further review it looked like a small gorilla going across the trail. The position it ended up at, just minutes later, a large figure stood up from the underbrush. It was seen by the researchers doing this.

Expecting to return that night, the decision was made to leave the area for the time being and return that night. If a juvenile was present at this encounter,



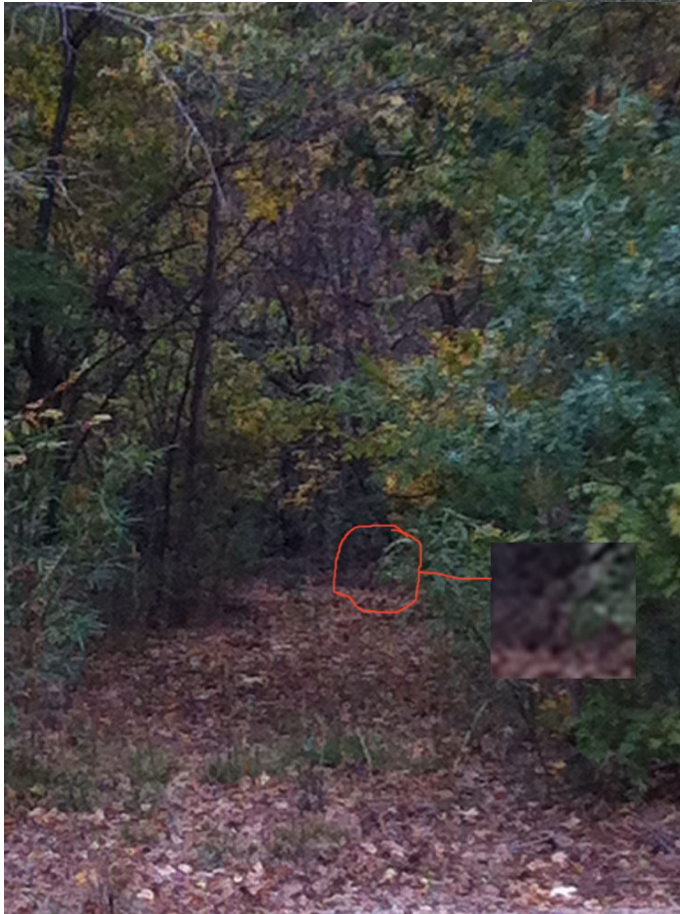
The first picture going across the trail catches the small figure in the open of the trail.

the adult would no doubt become aggressive if it thought the juvenile was in any danger.

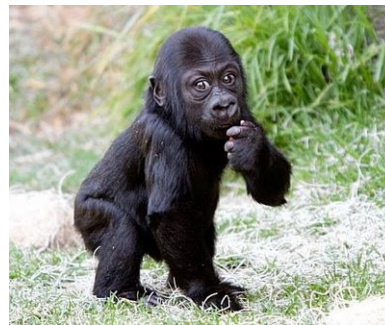
Biggimm took some more reference pictures within just minutes of Darkwing taking his, and it clearly shows that the juvenile had crossed completely over to the other side.



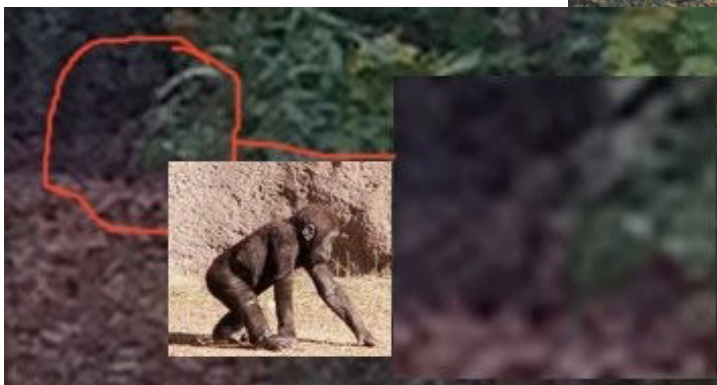
Biggimm's picture just minutes later shows the figure is no longer in the trail.



The second picture of the series shows the small figure nearly into the underbrush.



A juvenile gorilla for comparison to the figure in the pictures.



MABRC Member Forestguy contributed this picture of what the small figure looks like.



CompressorMike hunkers down at the start of the trail trying to get a better vantage spot to view the animals.



Mid-America Bigfoot Research Center

Where Researchers think outside the box!!

We are on the Web!
www.mid-americanbigfoot.com

Founded in 1997, the MABRC originally started as the Green Country Bigfoot Research Center, to give Oklahoma it's first credible Bigfoot Research group. In 2006, the GCBRC changed it's name to Mid-America to reflect the growing numbers of members joining from around the country.

With over 200 researchers and analysts in 4 countries, 3 continents, and nearly every state in the U.S., the MABRC is becoming the leader in Bigfoot Research.

From the Bigfoot Field Guide TV shows, radio shows, forums, websites and now this newsletter, the MABRC continues to share information.

MABRC Cast Exchange Program

In October 2010, Jim "Biggimm" Whitehead, MABRC Western Oklahoma State Co-Director began the Cast Exchange Program with the following concept.

Individuals or groups would be able to request a copy of a cast in the MABRC Cast Collection of their choosing, in exchange for a copy of a cast they have made. No original casts would be exchange, only high quality copies of the casts. The casts would be catalogued and accredited to the original discoverer and the donator if they wish. The purpose would be to build a collection of casts from all over North America in this region that all researchers from all groups that research in the region would have access to for comparison purposes.

If you would be interested in participating, please contact the MABRC at castexchange@mid-americanbigfoot.com

Photo: Biggimm, CompressorMike, Gearman and Bighead check out a portion of the MABRC Cast Collection.

